



FILTERANLAGEN NACH MASS

For oil, water, emulsion and  
other liquid media

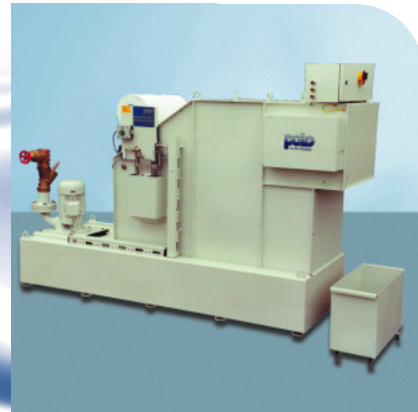


*Dry filter cake removal*



*Precise separation between clean  
and dirty chamber through  
travelling tubing seal*

*Dimensions can be modified to suit*



# Round bed filter

## Fleece execution

# RB

The RB series POLO round bed filter clean liquids, especially emulsion and oil used in the metalworking industry, completely automatically.

### Design

The filter container is welded. Drive- and reversing-shaft guide a metallic band which carries the filter medium (filter fabric). The chain running above the fleece, fitted with catcher-plates arranged transversely, makes sure of a problem-free disposal of the thickly built-up filter-cake. A long dryer section enables the filter cake to drain thus leaving only a limited residual moisture content. Advance is controlled by means of a geared motor through a floating switch which depends on the level of contaminant. The standard version is fabricated in steel. A version is also available for contact with the medium in stainless steel material.

Individual problems solved



# Round bed filter RB

## Functions

The contaminated liquid flows over a feed distributor, designed to avoid turbulence, into the filter bed.

The deep shape of the filter bed permits a substantial depth of liquid and thus a high level of throughput in relation ship to the surface area covered. Dirt particles are deposited on the filter fleece, and form a high-quality filter-layer thus improving the level of filtration.

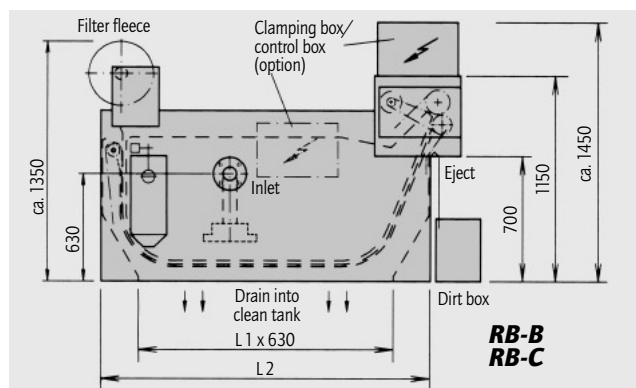
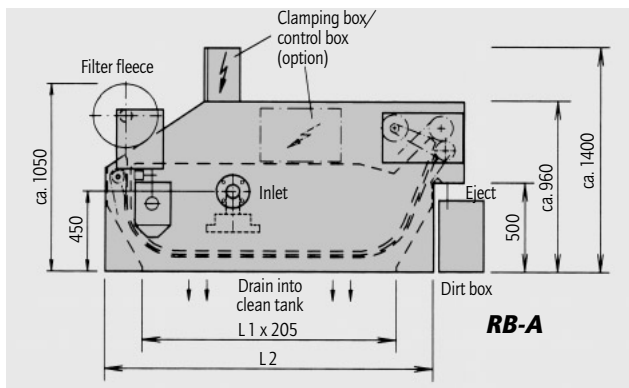
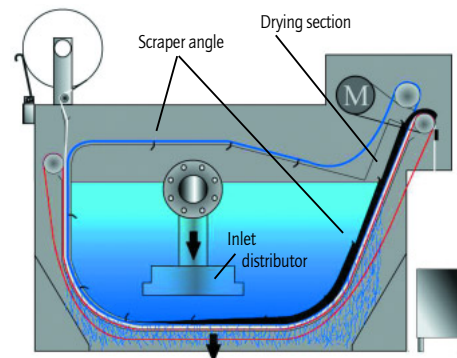
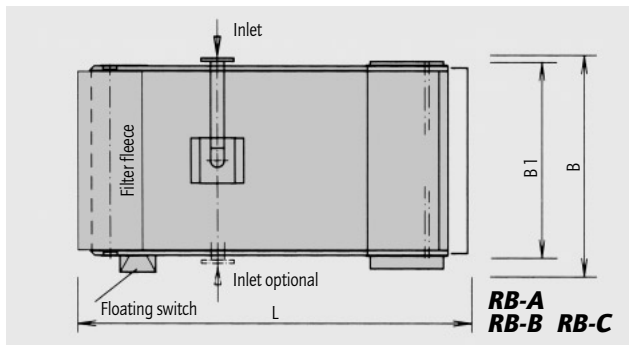
The depth climbs to a preset level where the belt timing is triggered. At the same time, used fleece is discarded into the residue container and fresh fleece is fed in.

The clean tank is arranged underneath the filter, and the cleaned liquid is normally transferred back by means of a pump.

A tubing seal reliably divides the residue chamber from the clean side of the filter.

## Option

This filter can be fitted with a fleece separating device which largely separates the filter cake from the fleece, and rolls up the fleece.



Filter-Typ	RB-A0.4	RB-A0.8	RB-A1.2	RB-B1.1	RB-B1.6	RB-B2.0	RB-B2.6	RB-B3.1	RB-C4.1	RB-C4.9
L	1200	1700	2200	1200	1700	2200	2700	3200	2710	3450
B	750	750	750	1250	1250	1250	1250	1250	1840	1840
L1	416	916	1416	416	916	1416	1916	2416	1940	2540
L2	830	1330	1830	910	1410	1910	2410	2910	2360	2960
B1	561	561	561	1086	1086	1086	1086	1086	1620	1620
Weight approx.	250 kg	280 kg	310 kg	390 kg	480 kg	570 kg	660 kg	750 kg	1150 kg	1300 kg
Flowrate max.	220 l/min.	440 l/min.	660 l/min.	625 l/min.	900 l/min.	1175 l/min.	1450 l/min.	1725 l/min.	2400 l/min.	2800 l/min.
Accessories: dirt box	L = 250, B = 600, H = 500			L = 300, B = 1000, H = 700			L = 300, B = 1600, H = 700			

Filter areas in m<sup>2</sup> · Fleece width A = 0,5 m B = 1 m C = 1,5 m

Subject to technical alterations.



**POLO Filter-Technik Bremen GmbH**  
 FILTERANLAGEN NACH MASS  
 For oil, water, emulsion  
 and other liquid media

In den Ellern 6 | 28832 Achim  
 Telefon 0421 23802-0 | Fax 23802-99  
 info@polo-filter.com | www.polo-filter.com